

# LAB

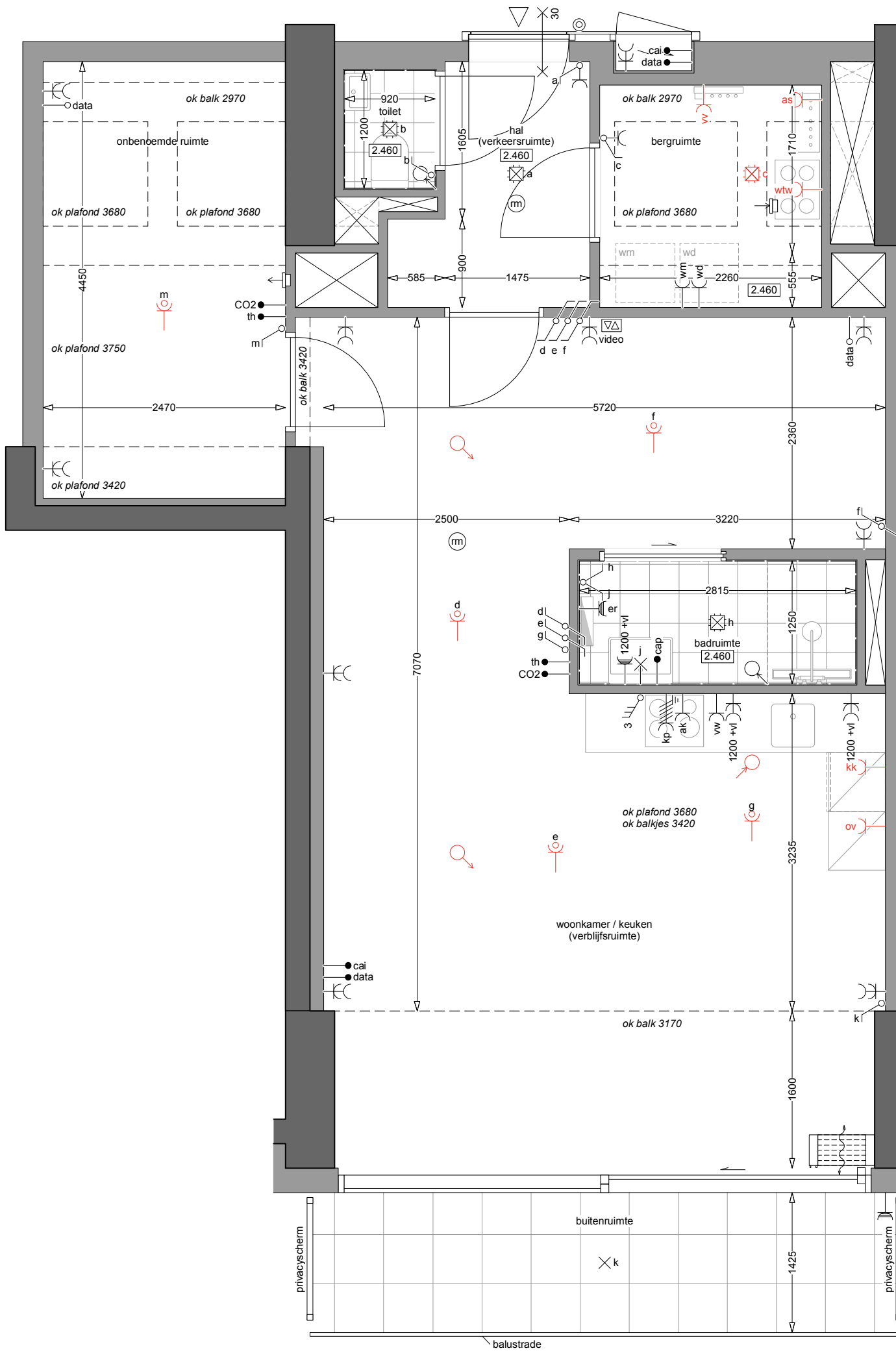
ATELIER KEMPE THILL  
ARCHITECTS AND PLANNERS

i.s.m.  
schiemann weyers  
architects

## type B1.5

2e verdieping  
GO: 72.7m<sup>2</sup>  
bouwnummers: 124  
28.03.2025

0 0.5 2m



# LAB

ATELIER KEMPE THILL  
ARCHITECTS AND PLANNERS

i.s.m.  
schiemann weyers  
architects

## type B1.5

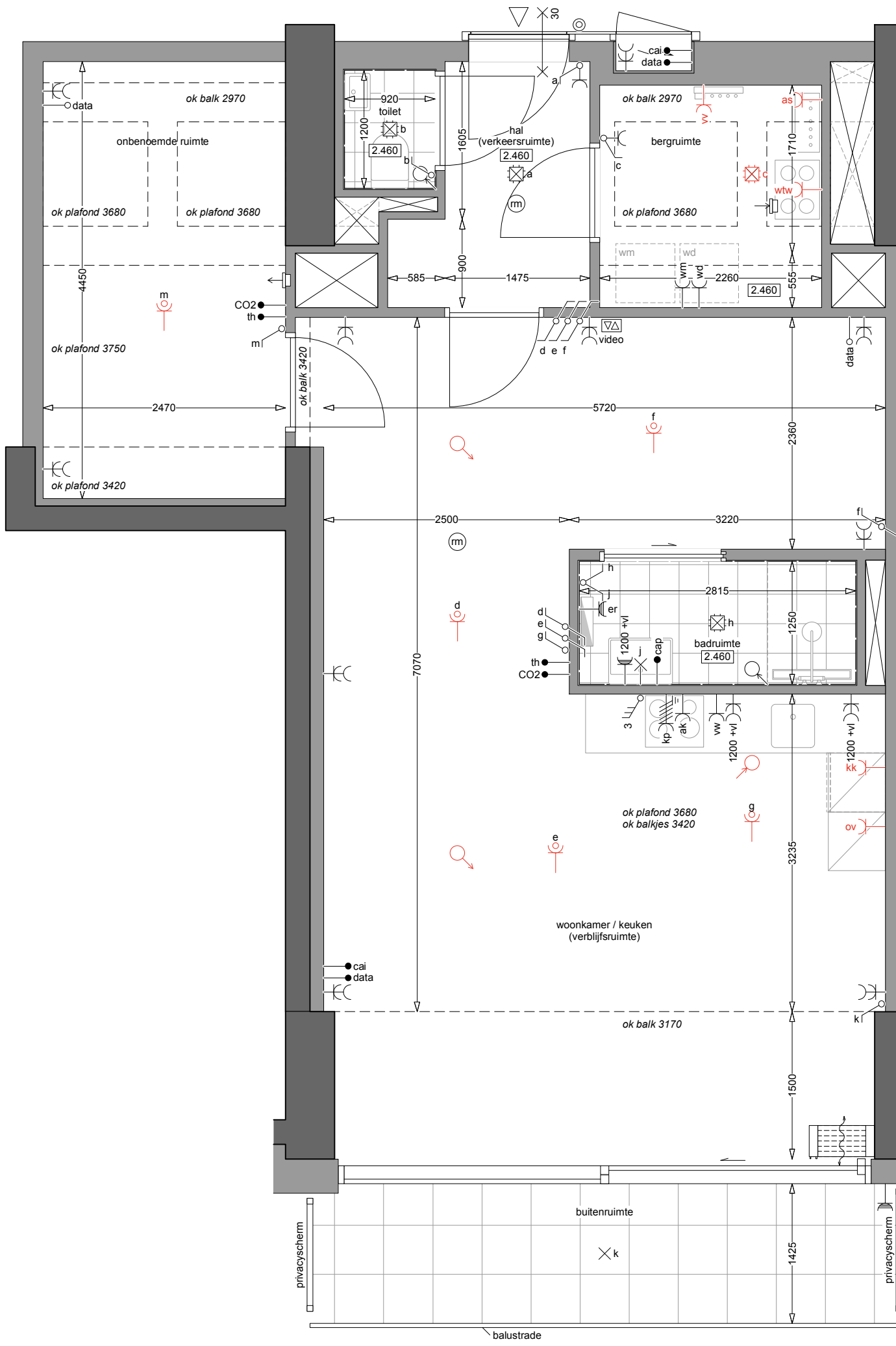
3e verdieping

GO: 72.1m<sup>2</sup>

bouwnummers: 112

28.03.2025





# LAB

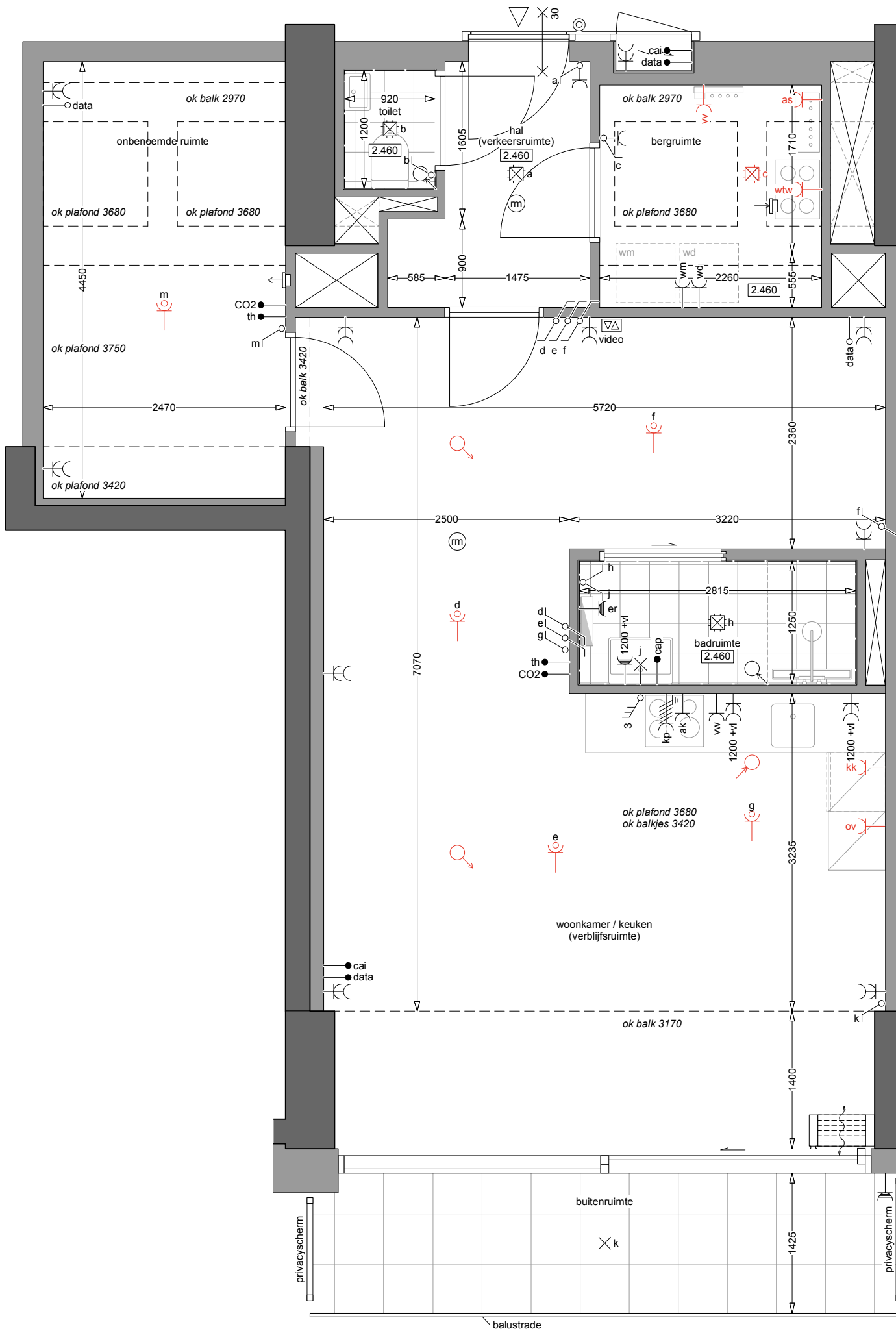
ATELIER KEMPE THILL  
ARCHITECTS AND PLANNERS

i.s.m.  
schiemann weyers  
architects

## type B1.5

4e verdieping  
GO: 71.6m<sup>2</sup>  
bouwnummers: 96  
28.03.2025

0 0.5 2m



# LAB

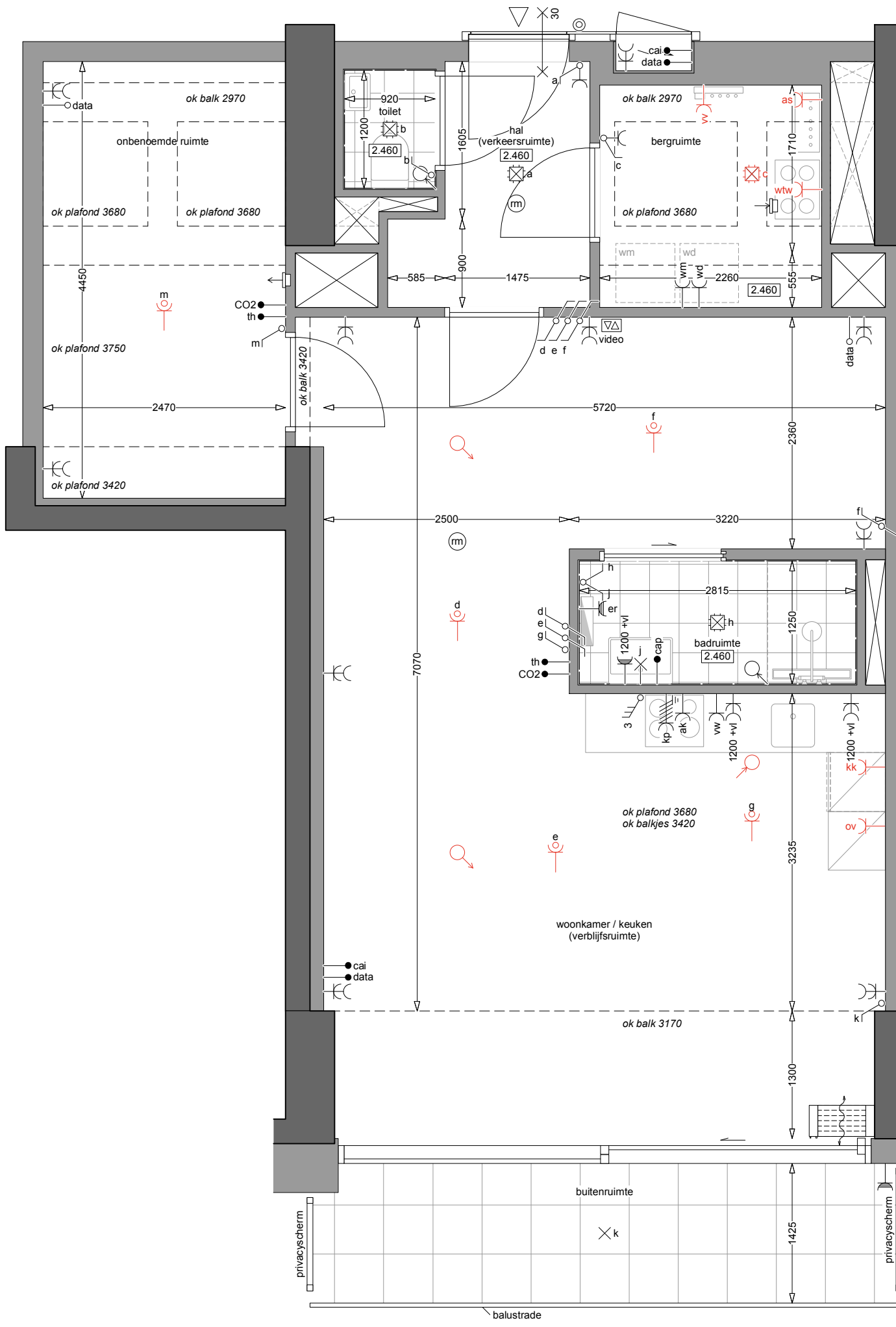
ATELIER KEMPE THILL  
ARCHITECTS AND PLANNERS

i.s.m.  
schiemann weyers  
architects

## type B1.5

5e verdieping  
GO: 71.0m<sup>2</sup>  
bouwnummers: 80  
28.03.2025





# LAB

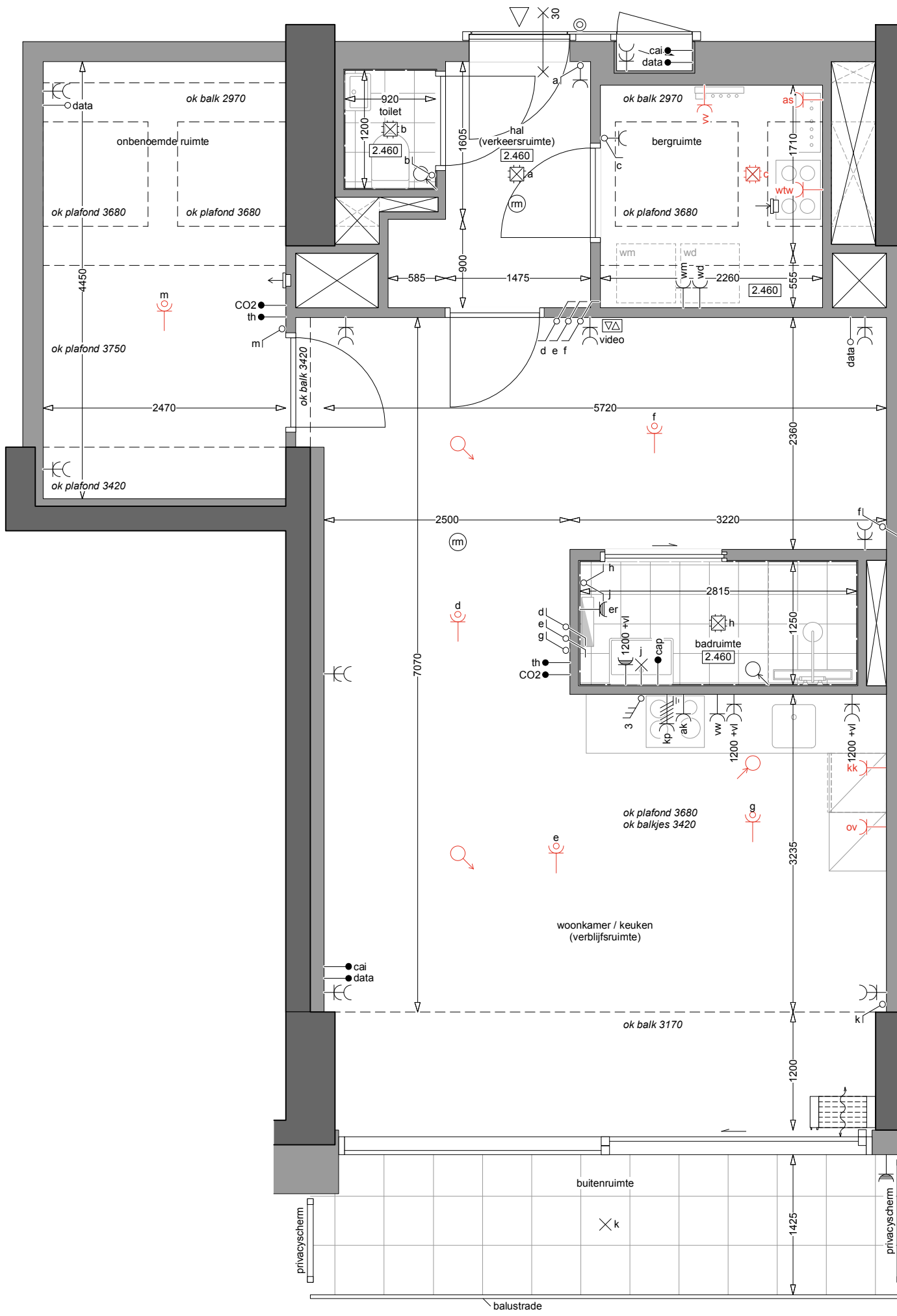
ATELIER KEMPE THILL  
ARCHITECTS AND PLANNERS

i.s.m.  
schiemann weyers  
architects

## type B1.5

6e verdieping  
GO: 70.5m<sup>2</sup>  
bouwnummers: 64  
28.03.2025

0 0.5 2m



# LAB

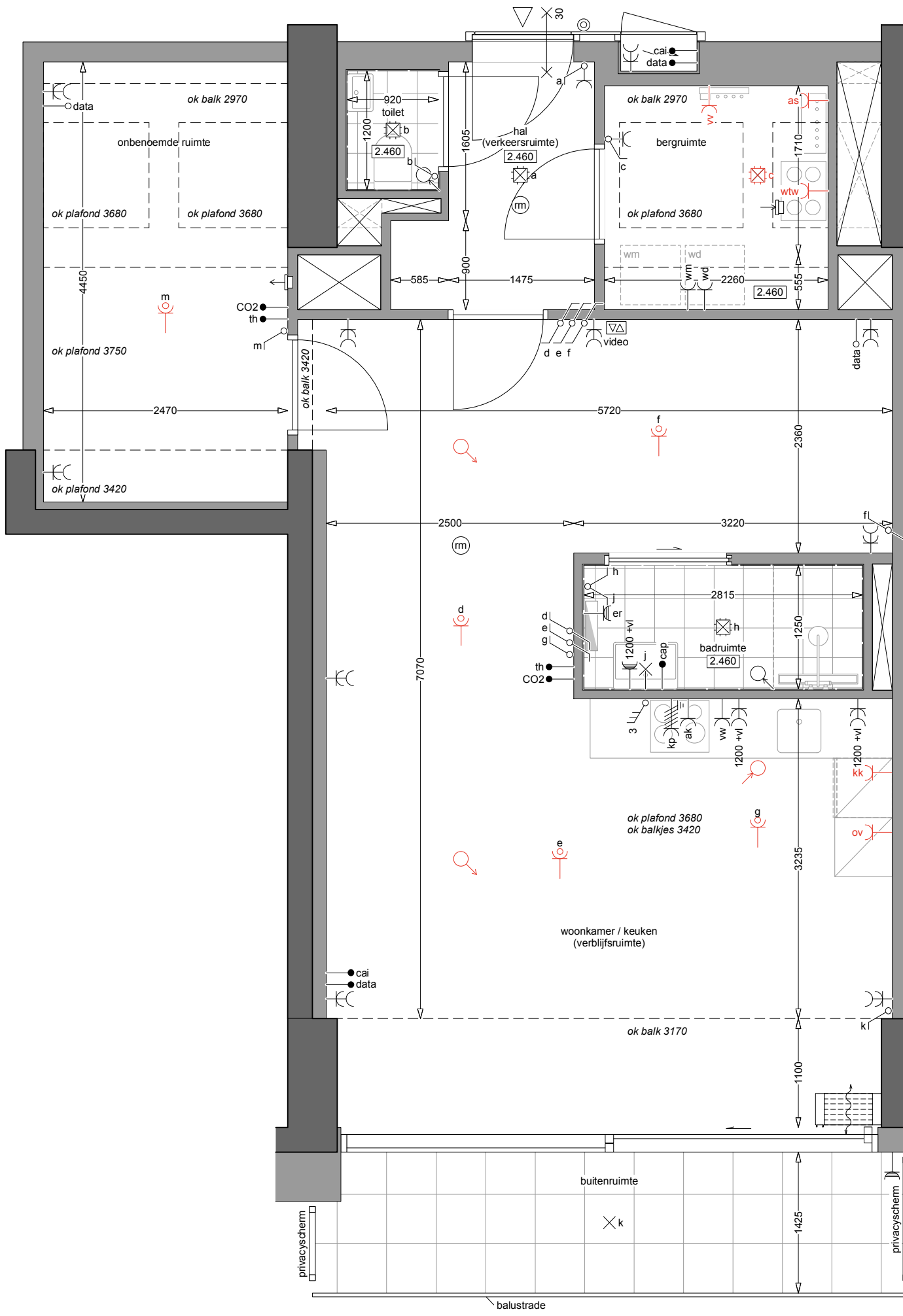
ATELIER KEMPE THILL  
ARCHITECTS AND PLANNERS

i.s.m.  
schiemann weyers  
architects

## type B1.5

7e verdieping  
GO: 69.9m<sup>2</sup>  
bouwnummers: 48  
28.03.2025

0 0.5 2m



# LAB

ATELIER KEMPE THILL  
ARCHITECTS AND PLANNERS

i.s.m.  
schiemann weyers  
architects

## type B1.5

8e verdieping  
GO: 69.4m<sup>2</sup>  
bouwnummers: 32  
28.03.2025

0 0.5 2m