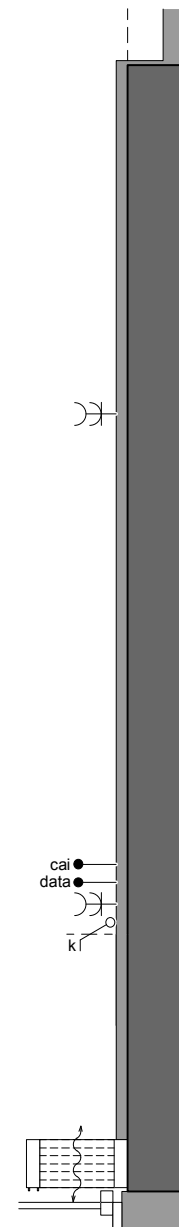


optionele voorzetwand



LAB

ATELIER KEMPE THILL
ARCHITECTS AND PLANNERS

i.s.m.
schiemann weyers
architects

type B1.3

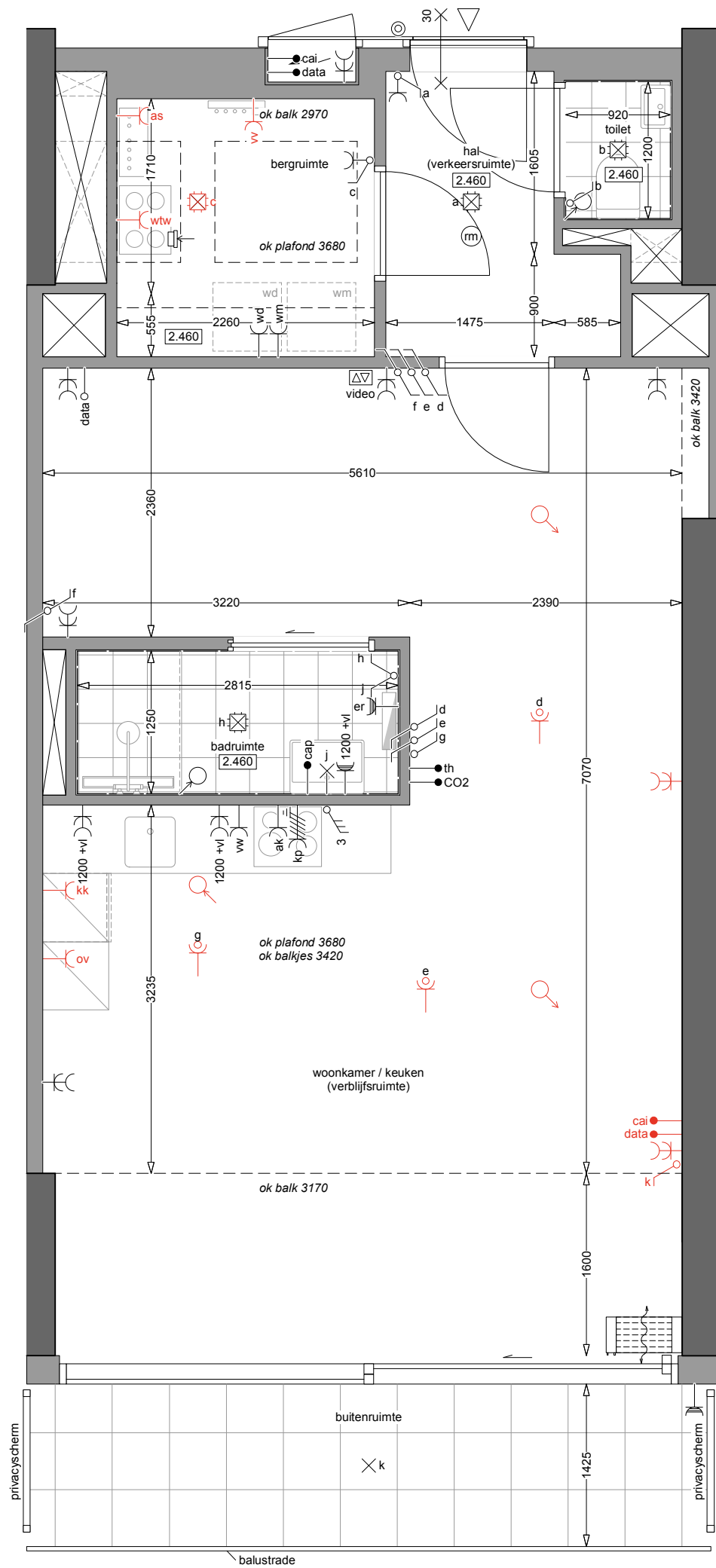
2e verdieping

GO: 60.7m²

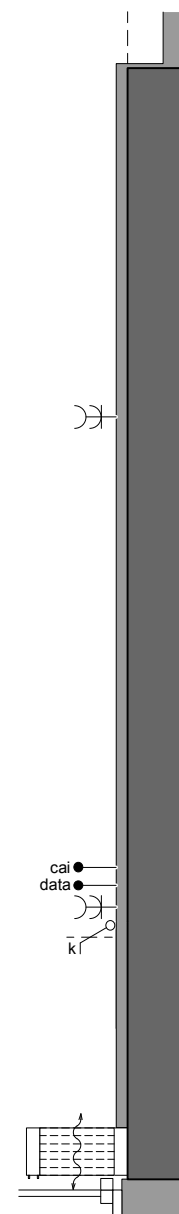
bouwnummers: 122

28.03.2025





optionele voorzetwand



LAB

ATELIER KEMPE THILL
ARCHITECTS AND PLANNERS

i.s.m.
schiemann weyers
architects

type B1.3

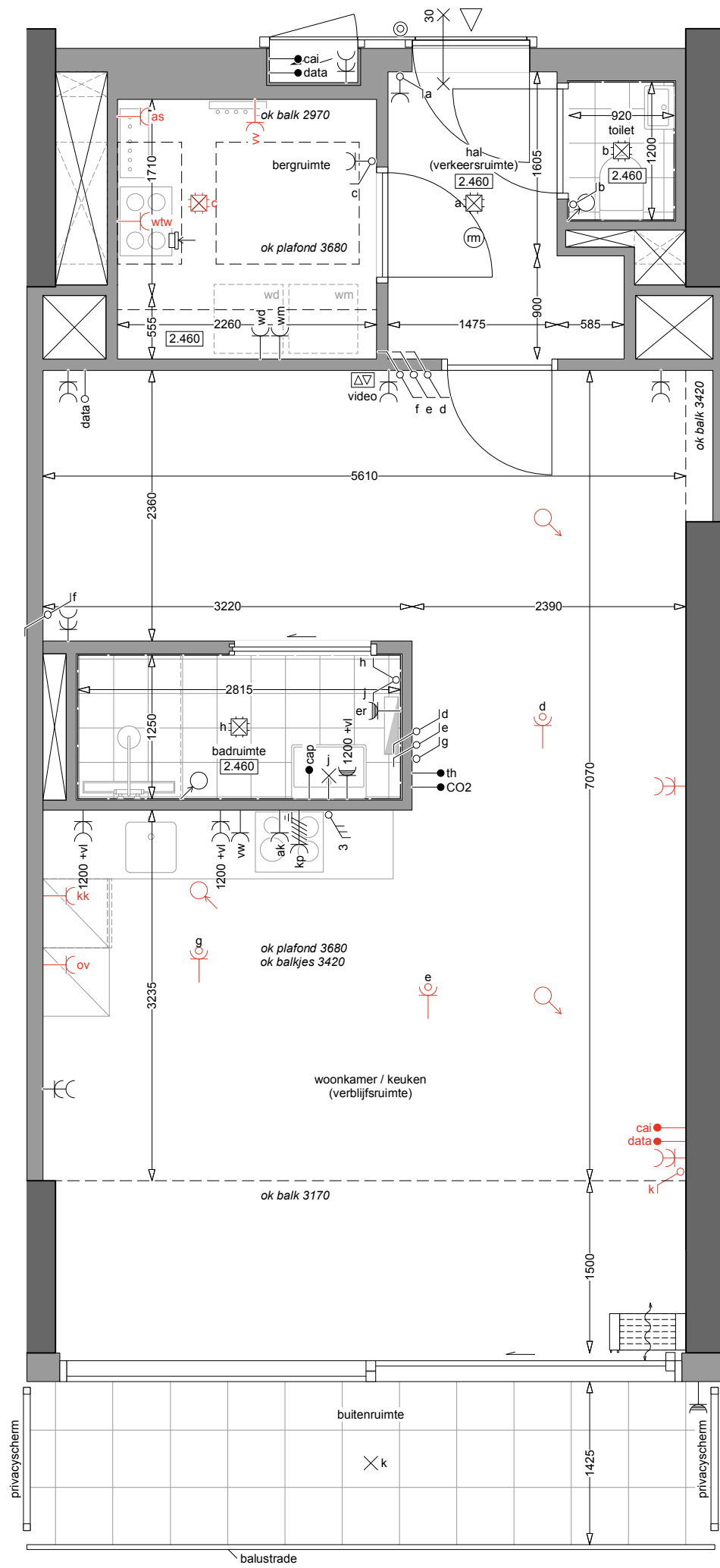
3e verdieping

GO: 60.2m²

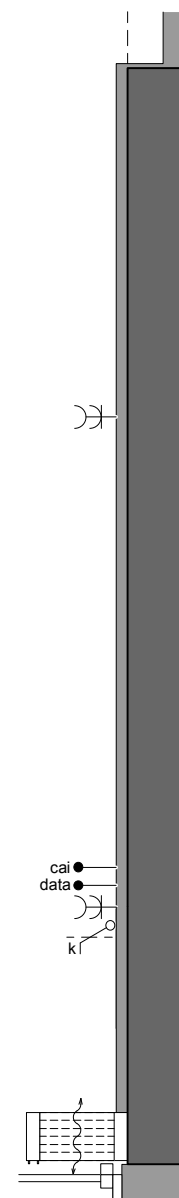
bouwnummers: 110

28.03.2025





optionele voorzetwand



LAB

ATELIER KEMPE THILL
ARCHITECTS AND PLANNERS

i.s.m.
schiemann weyers
architects

type B1.3

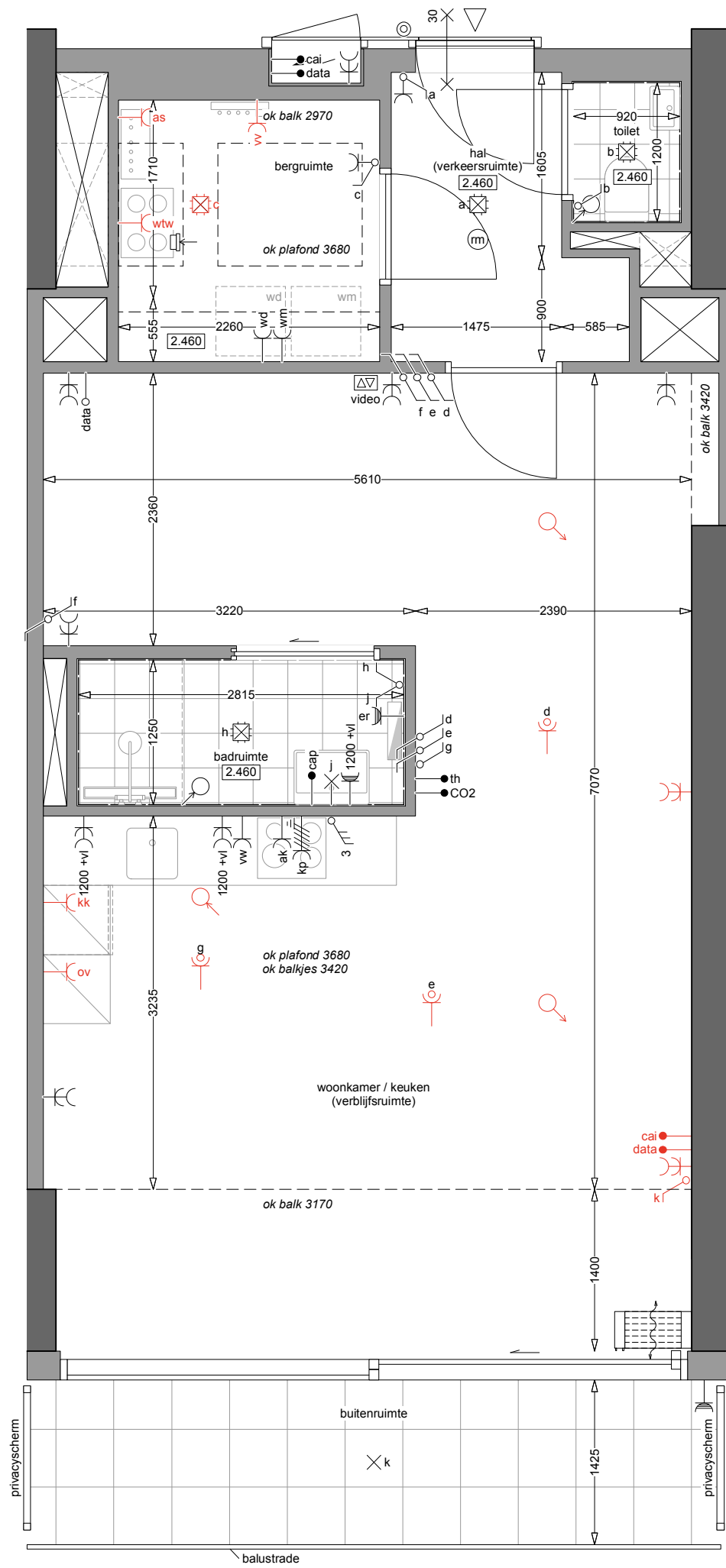
4e verdieping

GO: 59.6m²

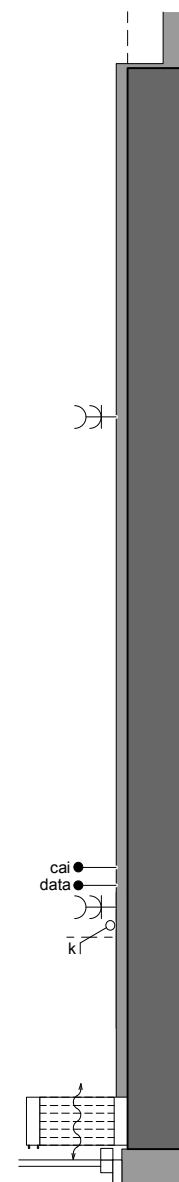
bouwnummers: 94

28.03.2025





optionele voorzetwand



LAB

ATELIER KEMPE THILL
ARCHITECTS AND PLANNERS

i.s.m.
schiemann weyers
architects

type B1.3

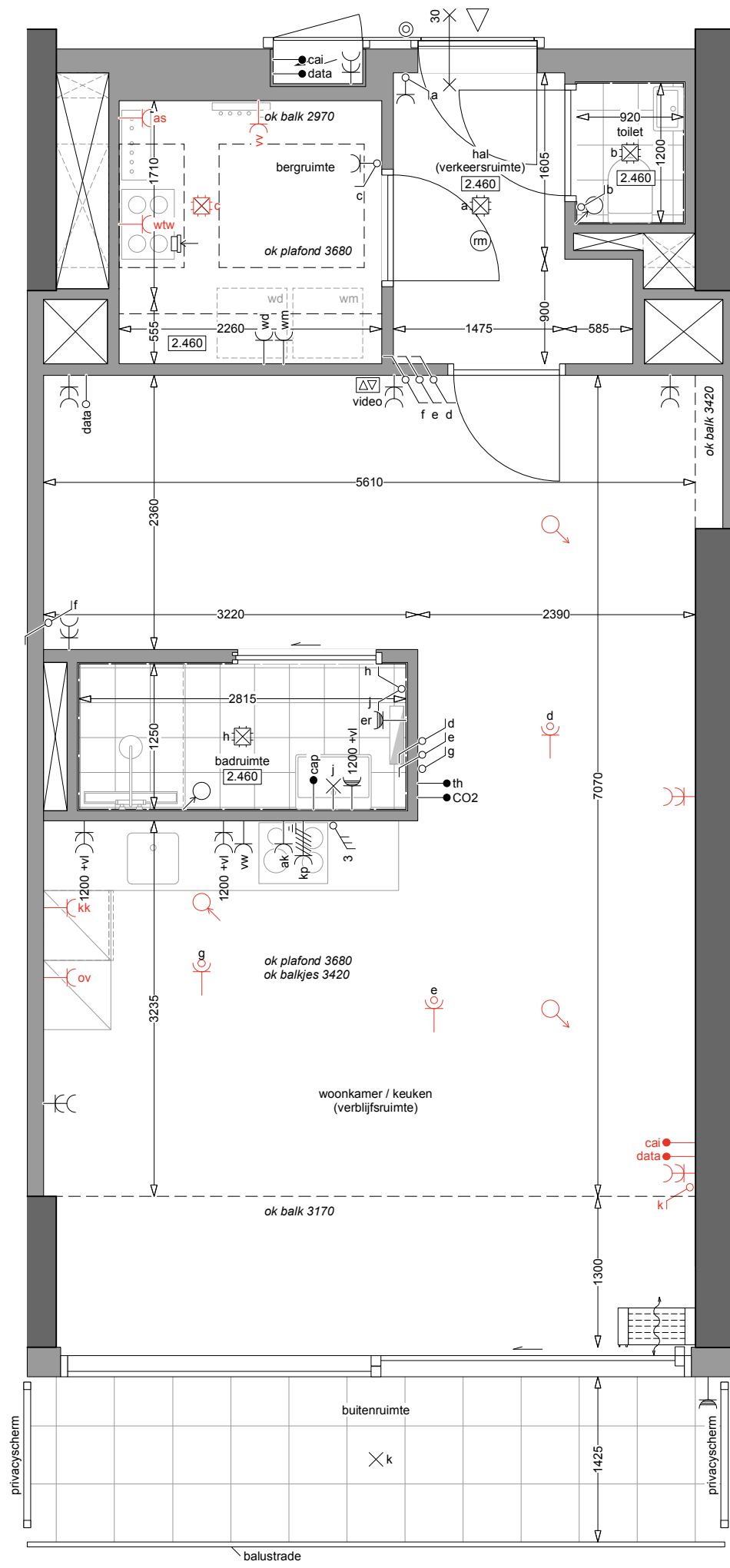
5e verdieping

GO: 59.1m²

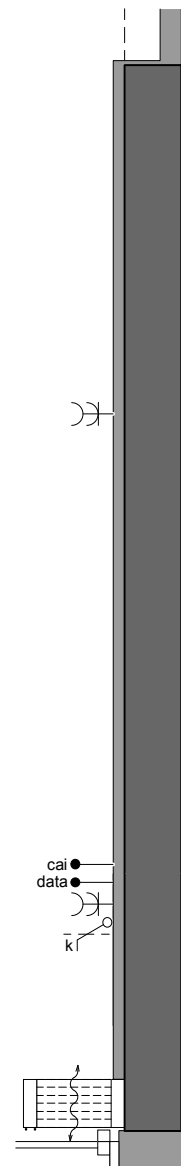
bouwnummers: 78

28.03.2025





optionele voorzetwand



LAB

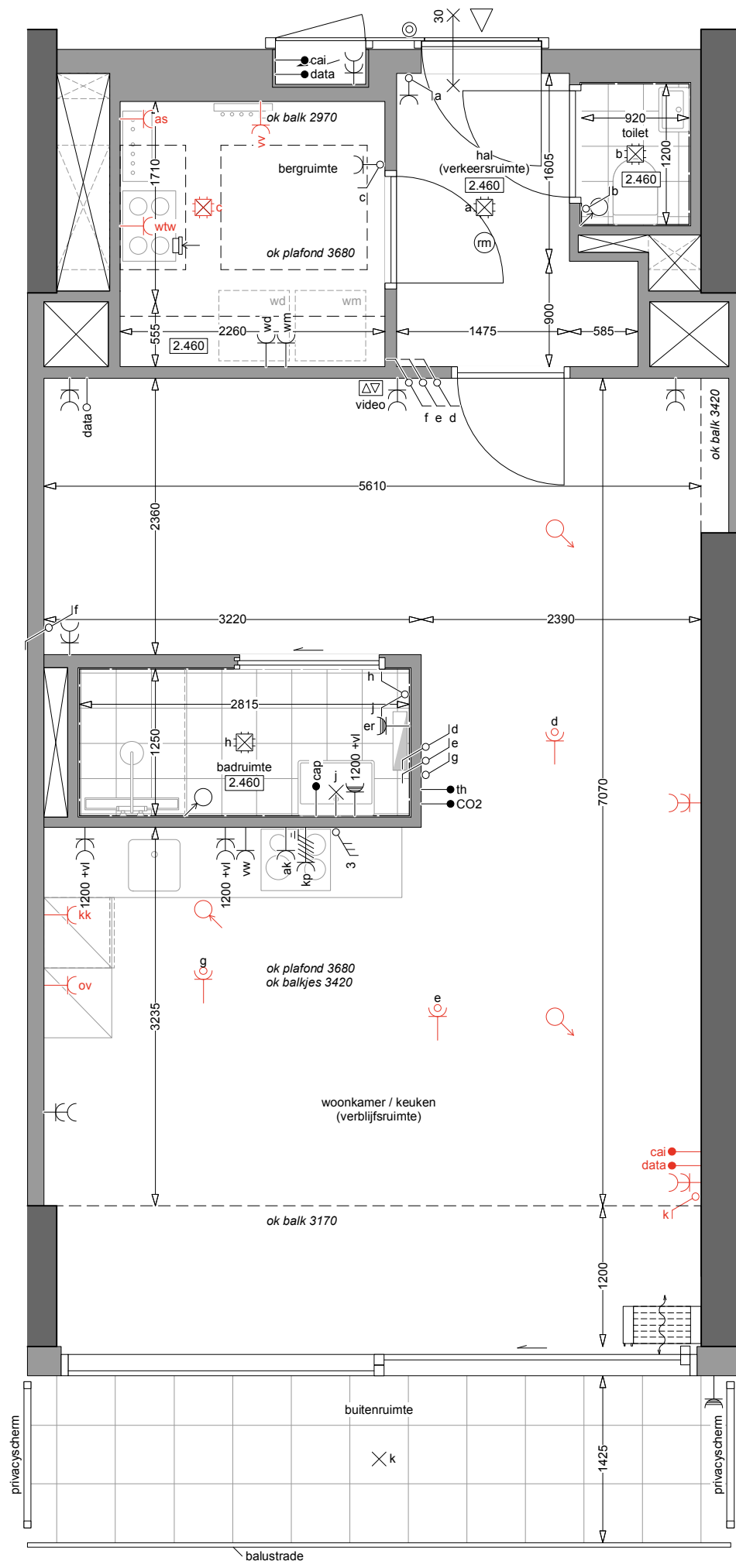
ATELIER KEMPE THILL
ARCHITECTS AND PLANNERS

i.s.m.
schiemann weyers
architects

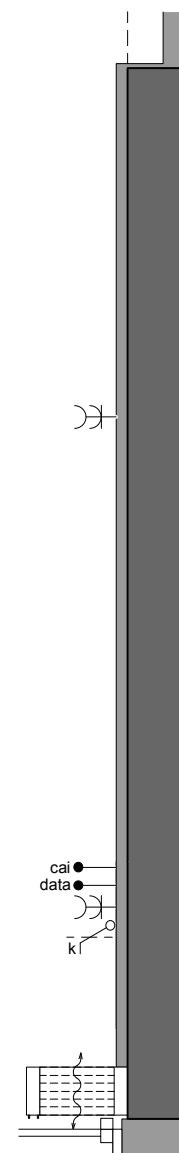
type B1.3

6e verdieping
GO: 58.5m²
bouwnummers: 62
28.03.2025





optionele voorzetwand



LAB

ATELIER KEMPE THILL
ARCHITECTS AND PLANNERS

i.s.m.
schiemann weyers
architects

type B1.3

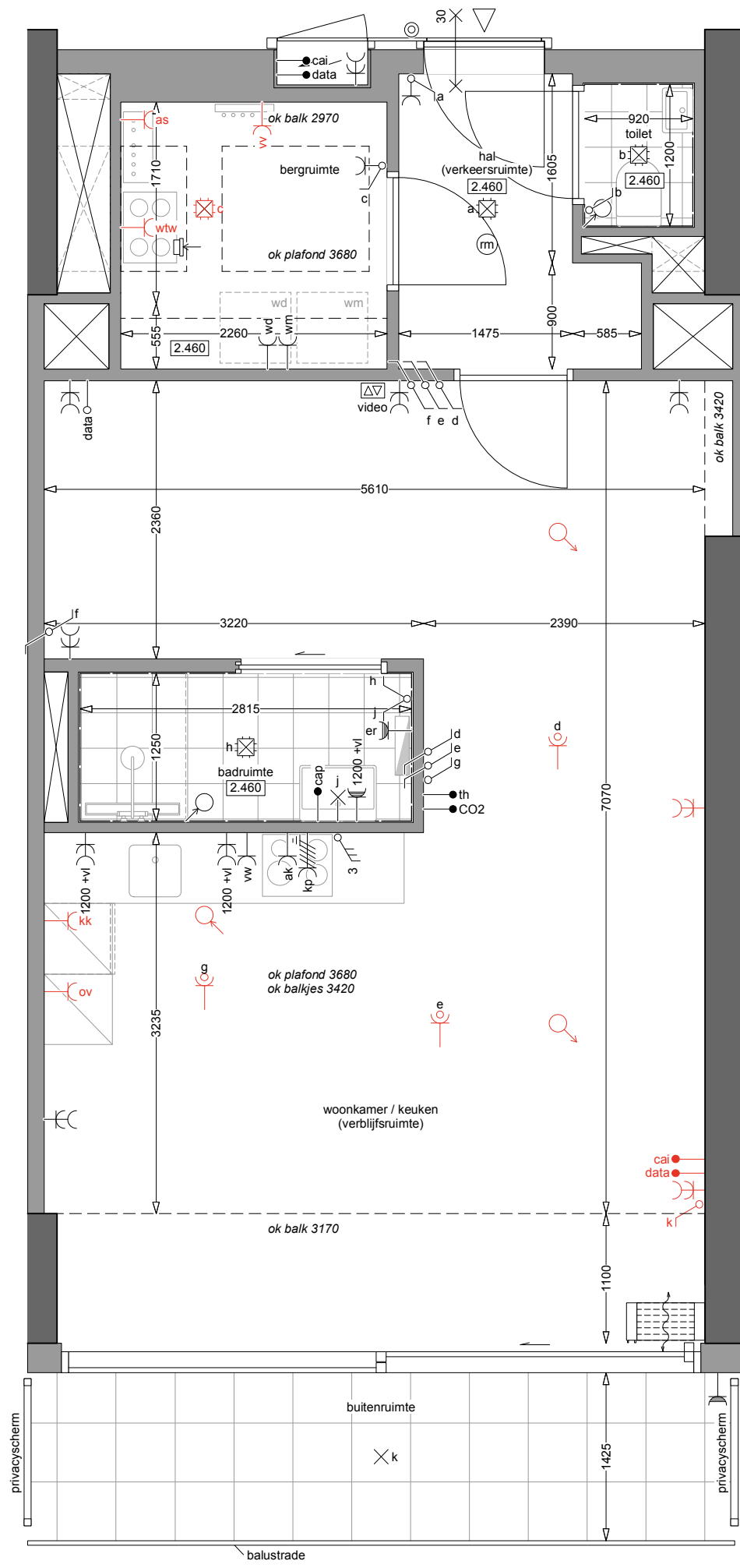
7e verdieping

GO: 58.0m²

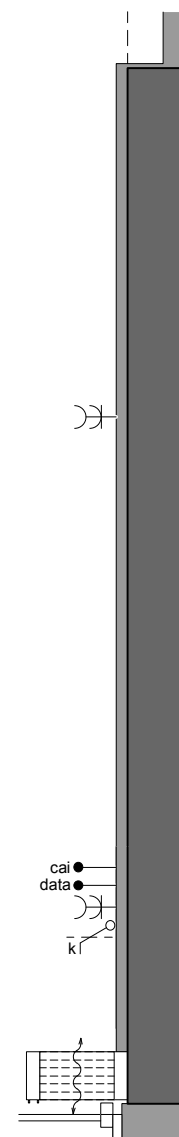
bouwnummers: 46

28.03.2025





optionele voorzetwand



LAB

ATELIER KEMPE THILL
ARCHITECTS AND PLANNERS

i.s.m.
schiemann weyers
architects

type B1.3

8e verdieping

GO: 57.4m²

bouwnummers: 30

28.03.2025

