

LAB

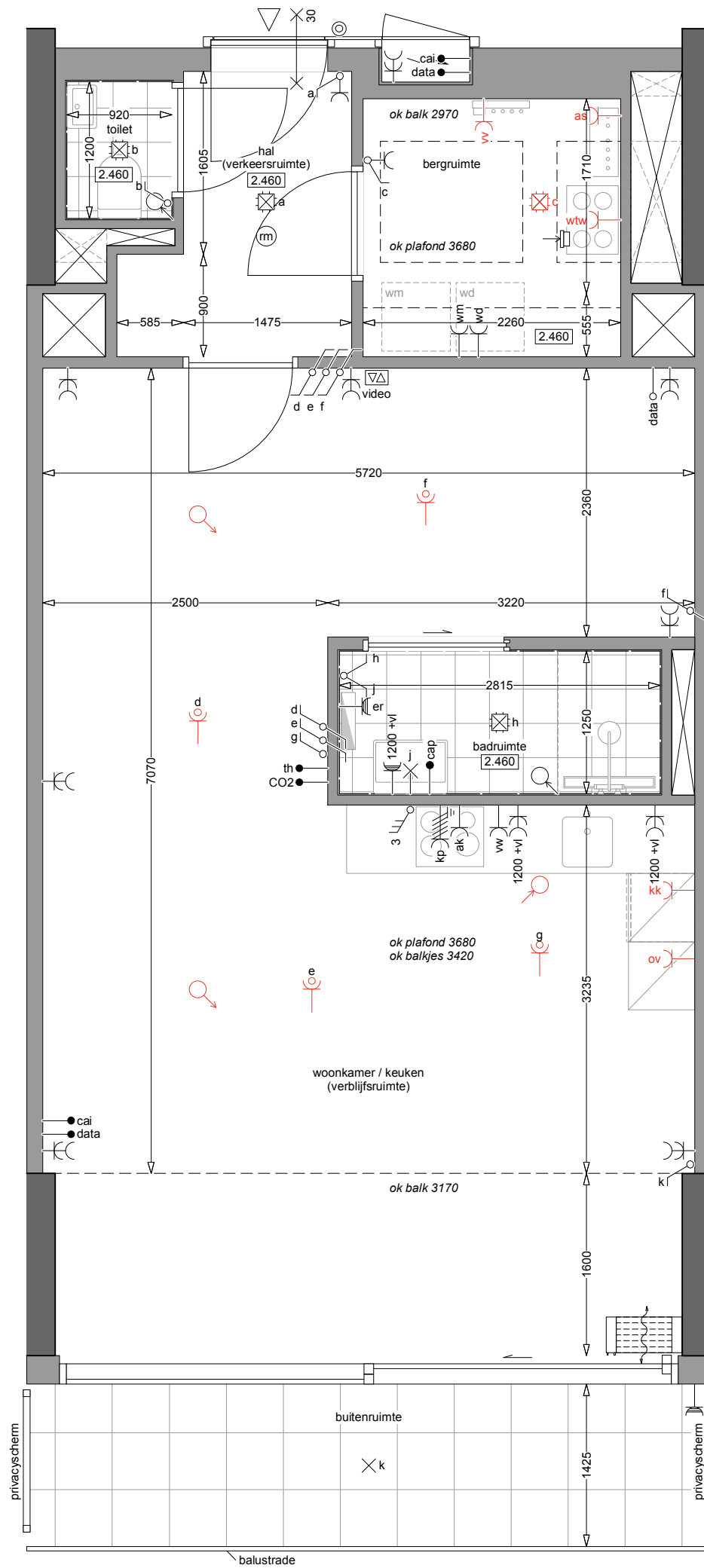
ATELIER KEMPE THILL
ARCHITECTS AND PLANNERS

i.s.m.
schiemann weyers
architects

type B1

2e verdieping
GO: 61.2m²
bouwnummers: 119, 121
28.03.2025





LAB

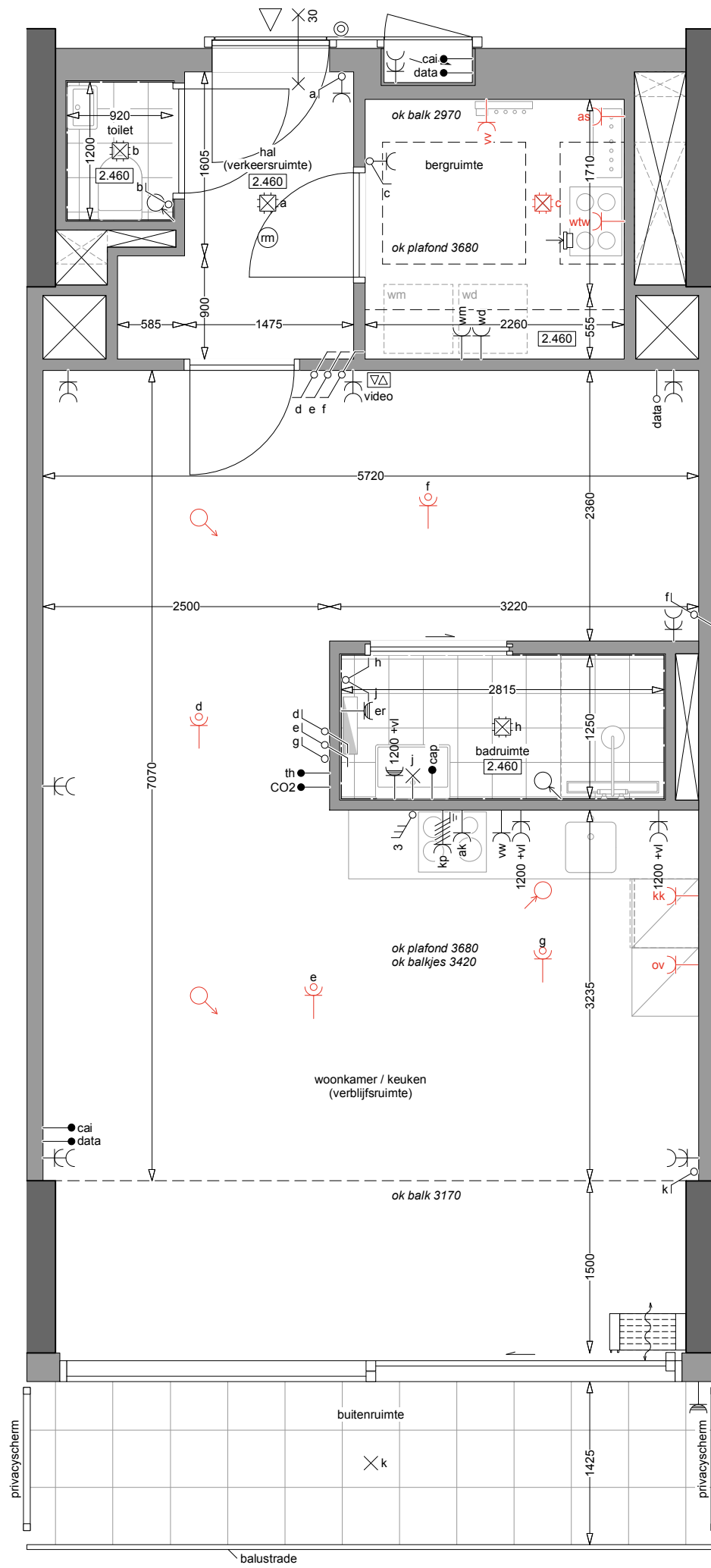
ATELIER KEMPE THILL
ARCHITECTS AND PLANNERS

i.s.m.
schiemann weyers
architects

type B1

3e verdieping
GO: 60.6m²
bouwnummers: 105, 107, 109
28.03.2025





LAB

ATELIER KEMPE THILL
ARCHITECTS AND PLANNERS

i.s.m.
schiemann weyers
architects

type B1

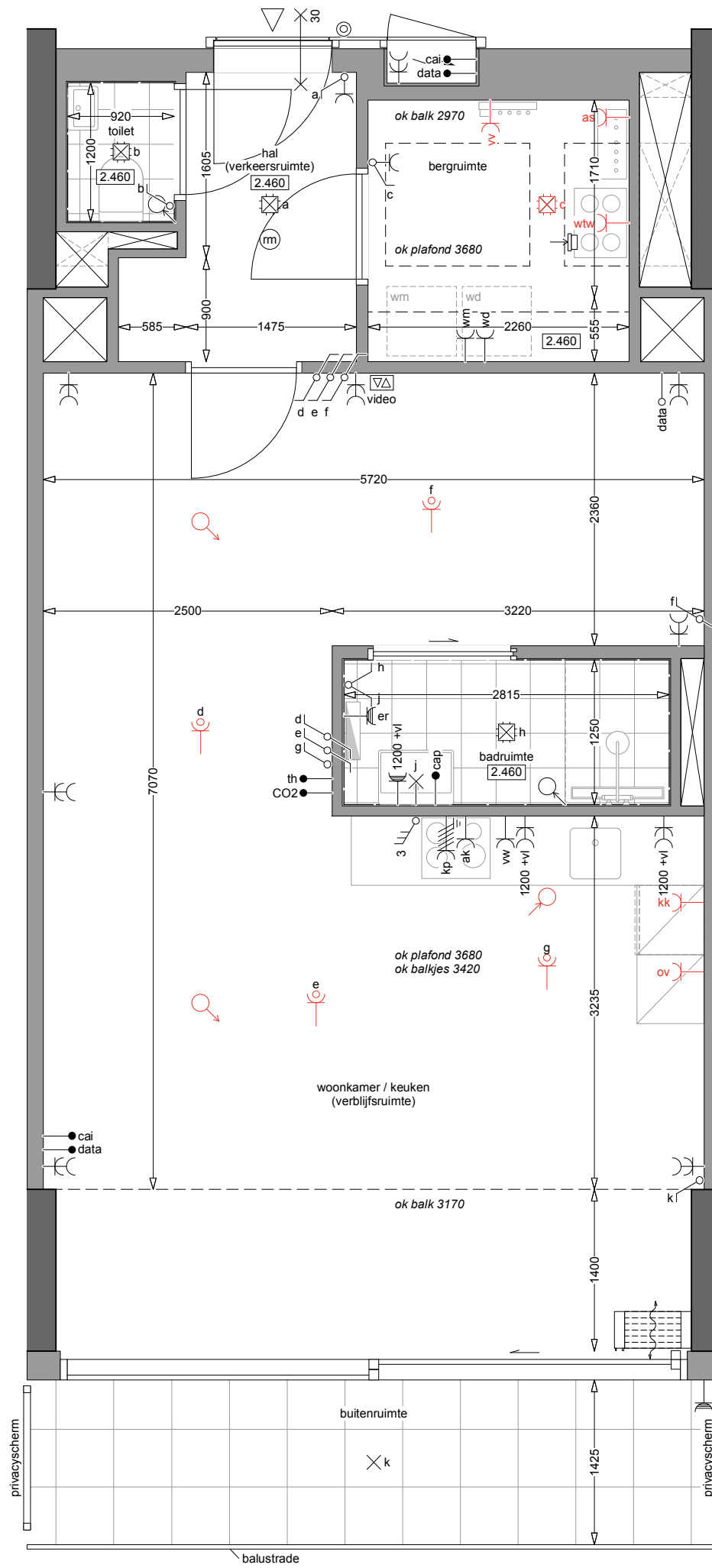
4e verdieping

GO: 60.1m²

bouwnummers: 89, 91, 93

28.03.2025





LAB

ATELIER KEMPE THILL
ARCHITECTS AND PLANNERS

i.s.m.
schiemann weyers
architects

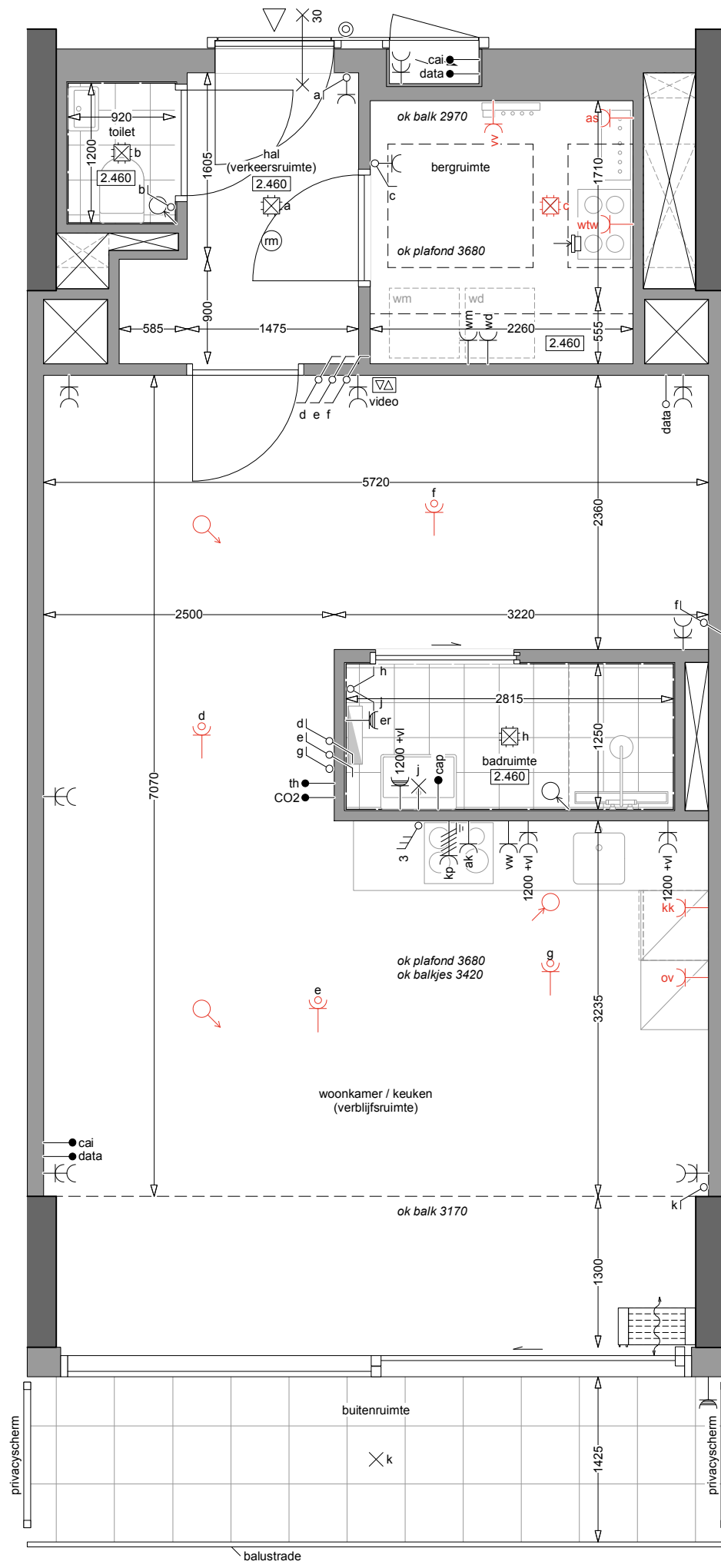
type B1

5e verdieping

GO: 59.5m²

bouwnummers: 71, 73, 75, 77
28.03.2025





LAB

ATELIER KEMPE THILL
ARCHITECTS AND PLANNERS

i.s.m.
schiemann weyers
architects

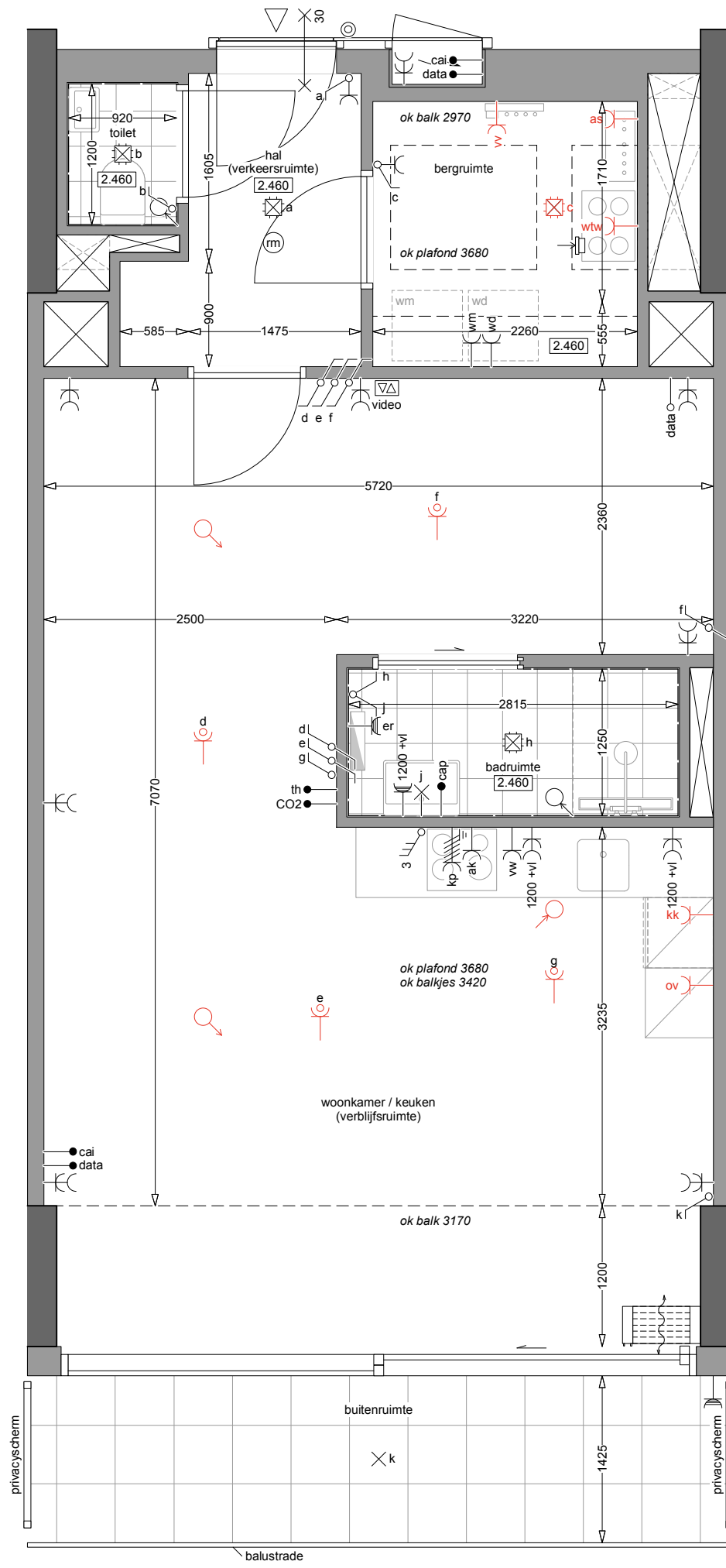
type B1

6e verdieping

GO: 59.0m²

bouwnummers: 55, 57, 59, 61
28.03.2025

0 0.5 2m



LAB

ATELIER KEMPE THILL
ARCHITECTS AND PLANNERS

i.s.m.
schiemann weyers
architects

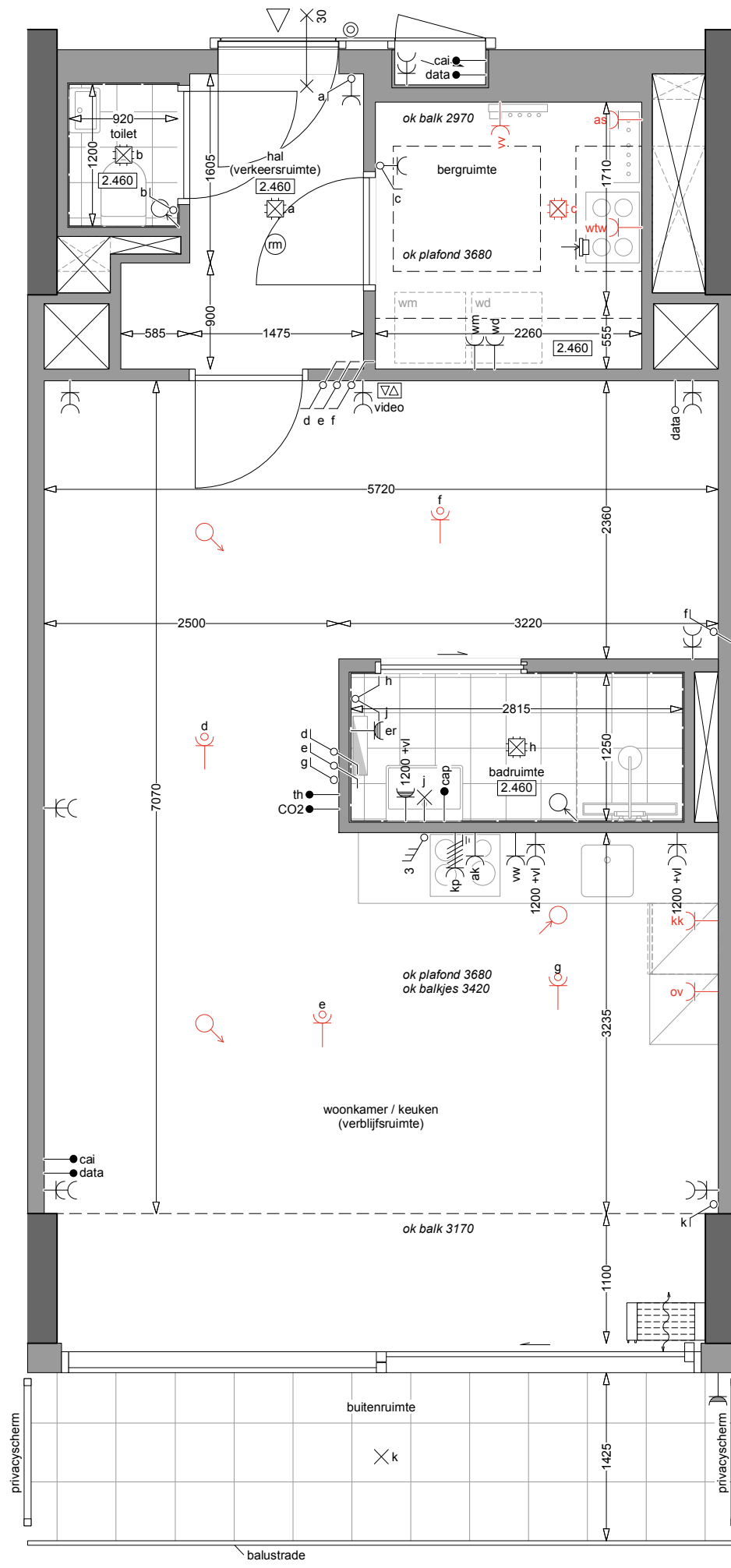
type B1

7e verdieping

GO: 58.4m²

bouwnummers: 39, 41, 43, 45
28.03.2025





LAB

ATELIER KEMPE THILL
ARCHITECTS AND PLANNERS

i.s.m.
schiemann weyers
architects

type B1

8e verdieping

GO: 57.9m²

bouwnummers: 23, 25, 27, 29
28.03.2025

0 0.5 2m