

# LAB

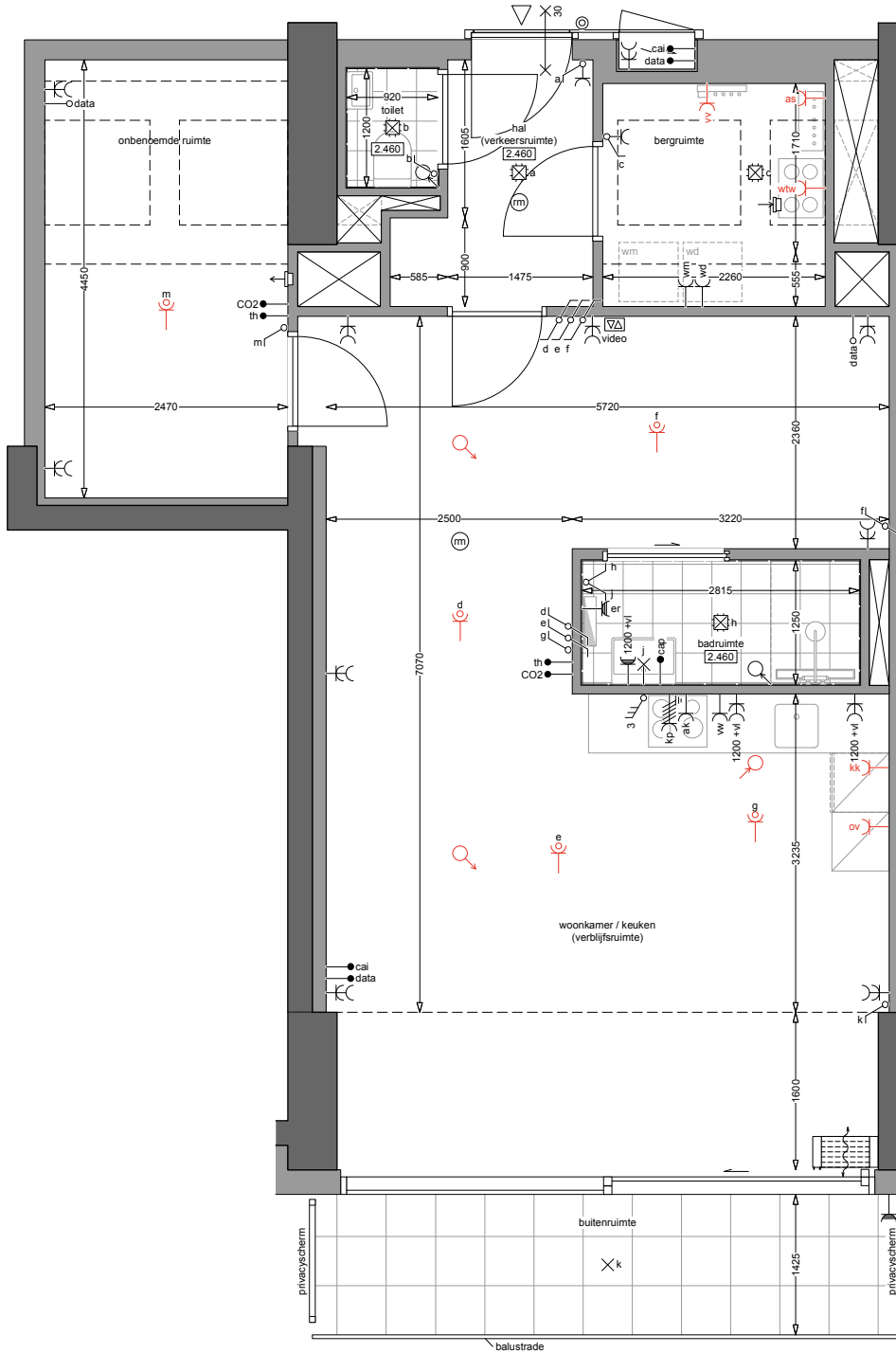
ATELIER KEMPE THILL  
ARCHITECTS AND PLANNERS

i.s.m.  
schiemann weyers  
architects

## type B1.5

2e verdieping  
GO: 72.7m<sup>2</sup>  
bouwnummers: 124  
13.02.2025





# LAB

ATELIER KEMPE THILL  
ARCHITECTS AND PLANNERS

i.s.m.  
schiemann weyers  
architects

## type B1.5

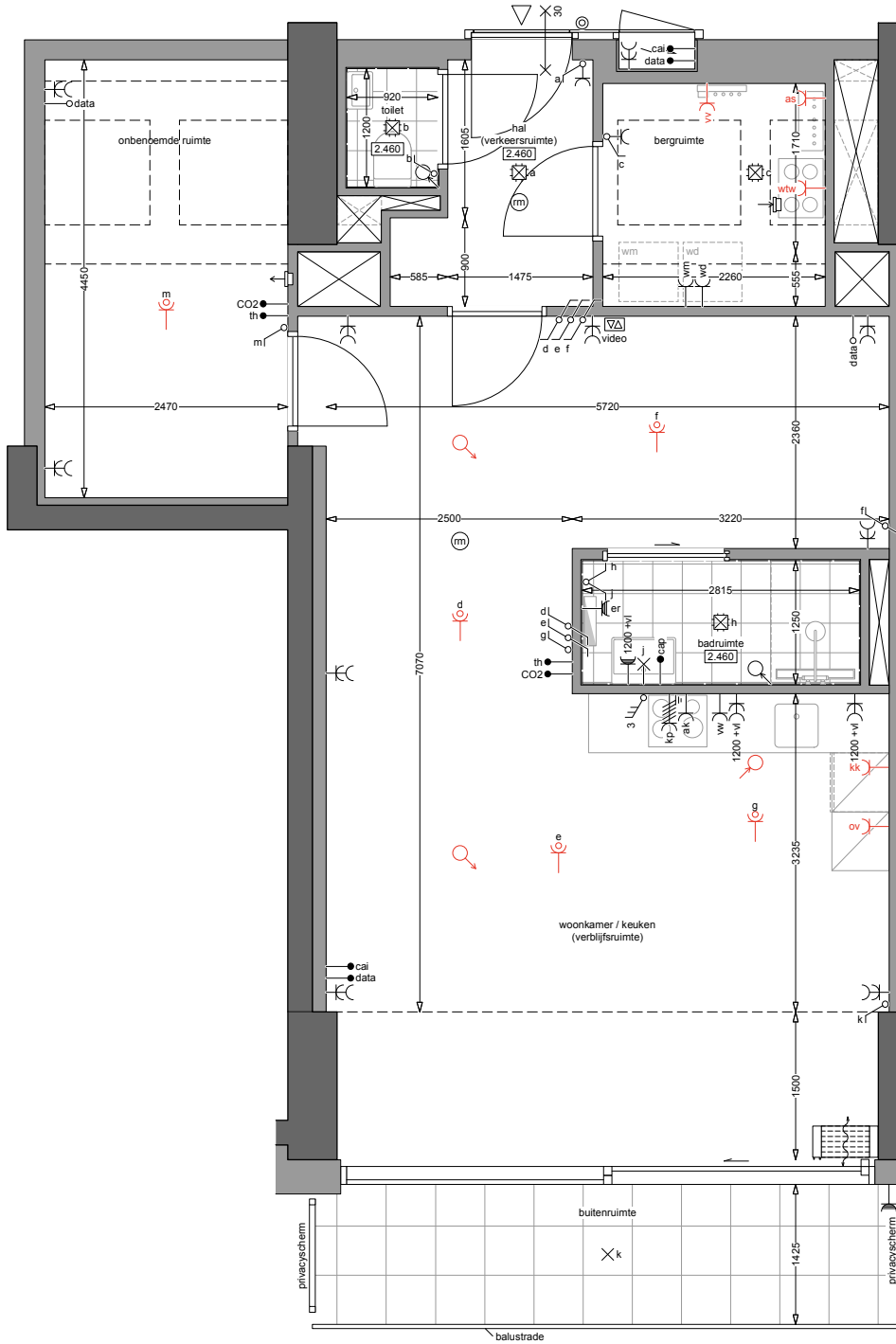
3e verdieping

GO: 72.1m<sup>2</sup>

bouwnummers: 112

13.02.2025





# LAB

ATELIER KEMPE THILL  
ARCHITECTS AND PLANNERS

i.s.m.

schiamann weyers  
architects

**type B1.5**

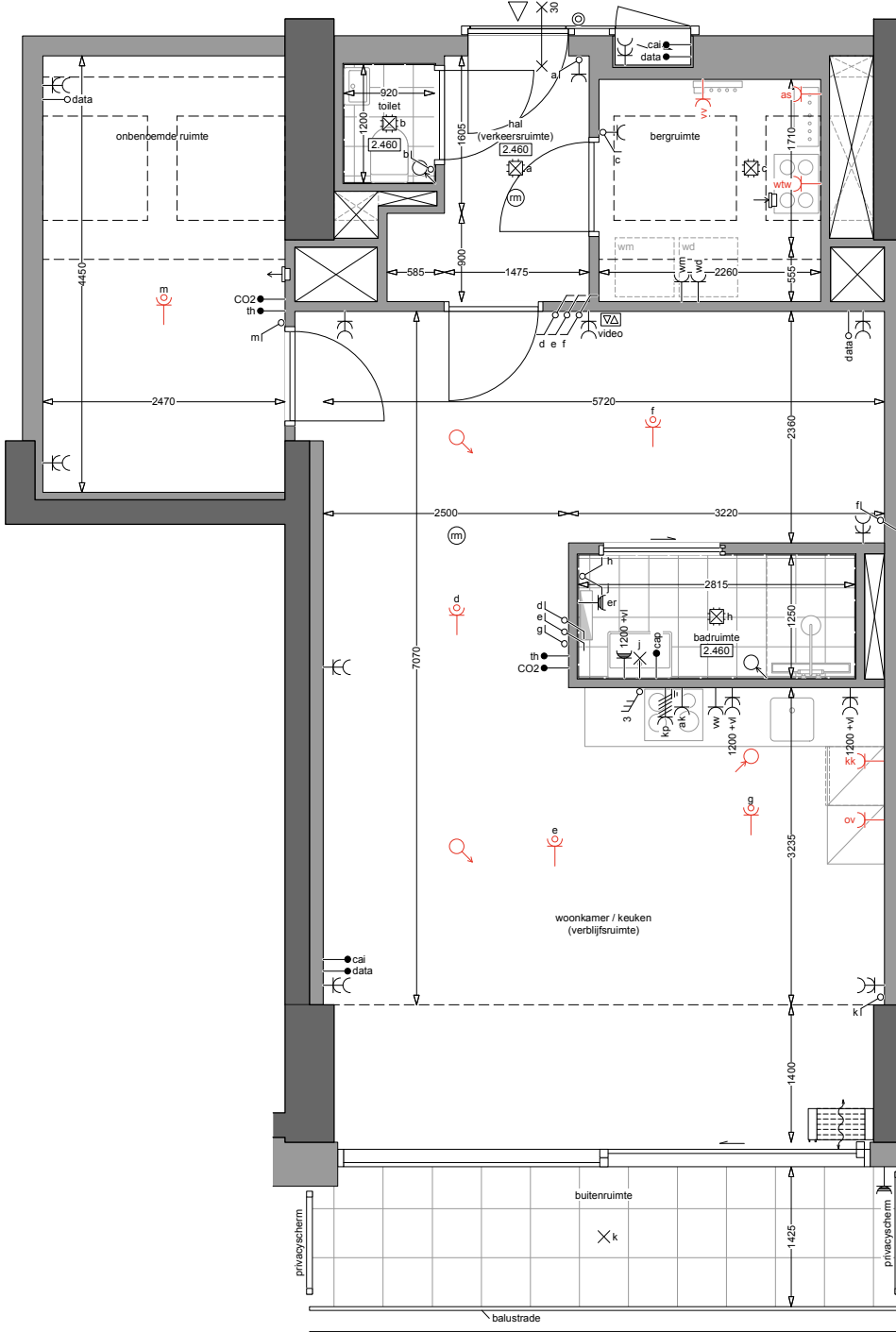
4e verdieping

GO: 71.6m<sup>2</sup>

bouwnummers: 96

13.02.2025





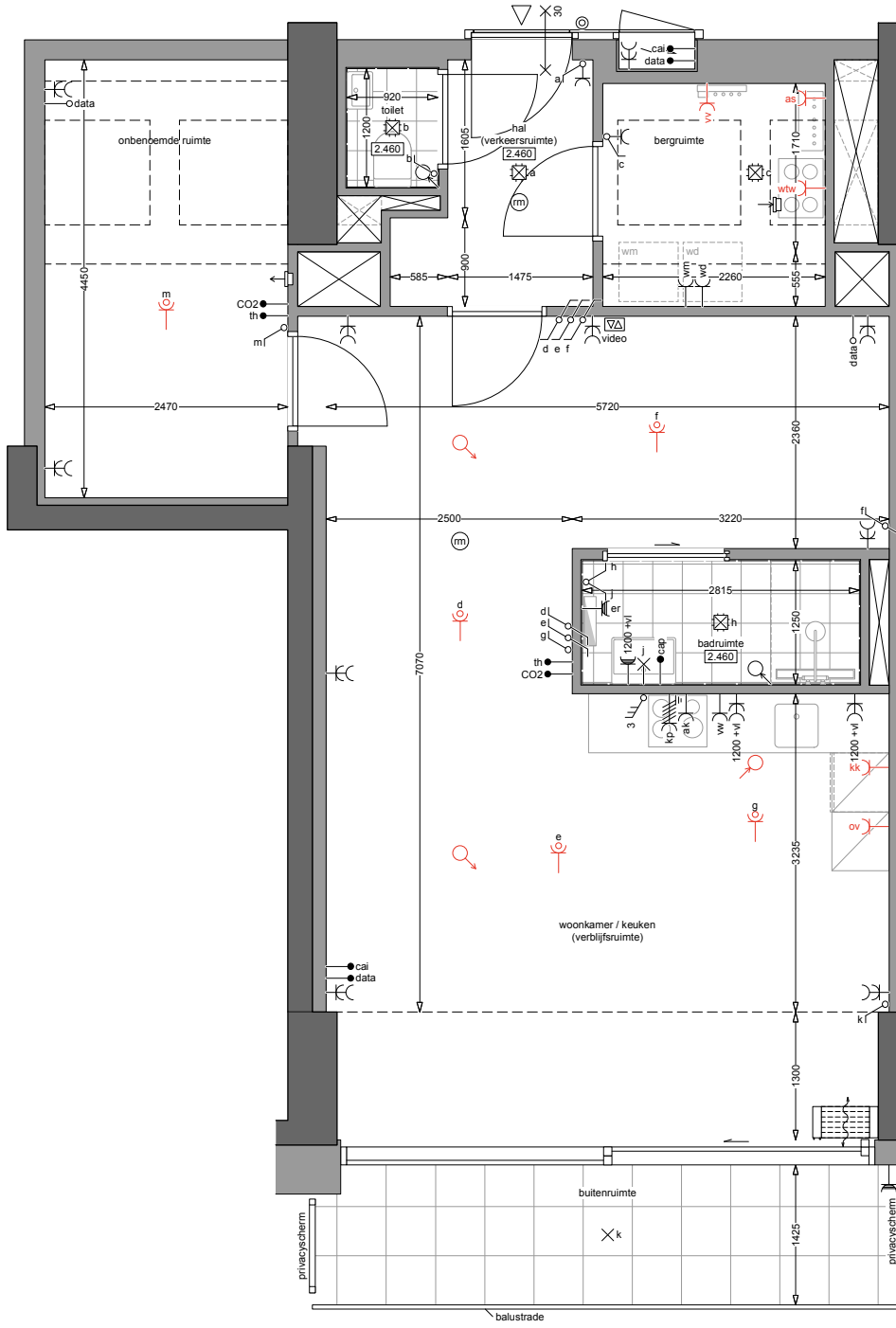
# LAB

ATELIER KEMPE THILL  
 ARCHITECTS AND PLANNERS  
 i.s.m.  
 schieman weyers  
 architects

**type B1.5**

5e verdieping  
 GO: 71.0m<sup>2</sup>  
 bouwnummers: 80  
 13.02.2025





# LAB

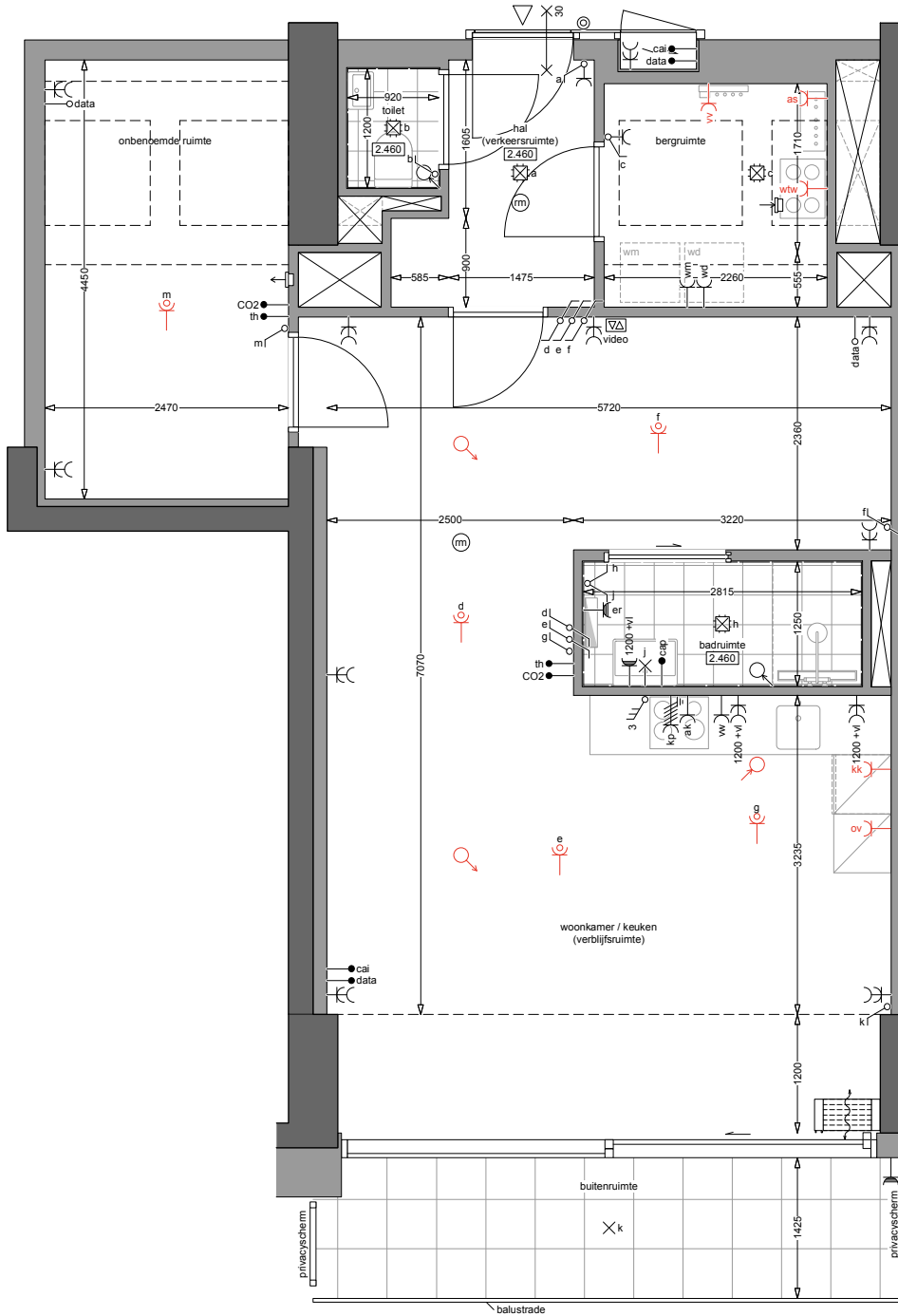
ATELIER KEMPE THILL  
ARCHITECTS AND PLANNERS

i.s.m.  
schiemann weyers  
architects

## type B1.5

6e verdieping  
GO: 70.5m<sup>2</sup>  
bouwnummers: 64  
13.02.2025





# LAB

ATELIER KEMPE THILL  
ARCHITECTS AND PLANNERS

i.s.m.

schiemann weyers  
architects

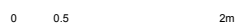
## type B1.5

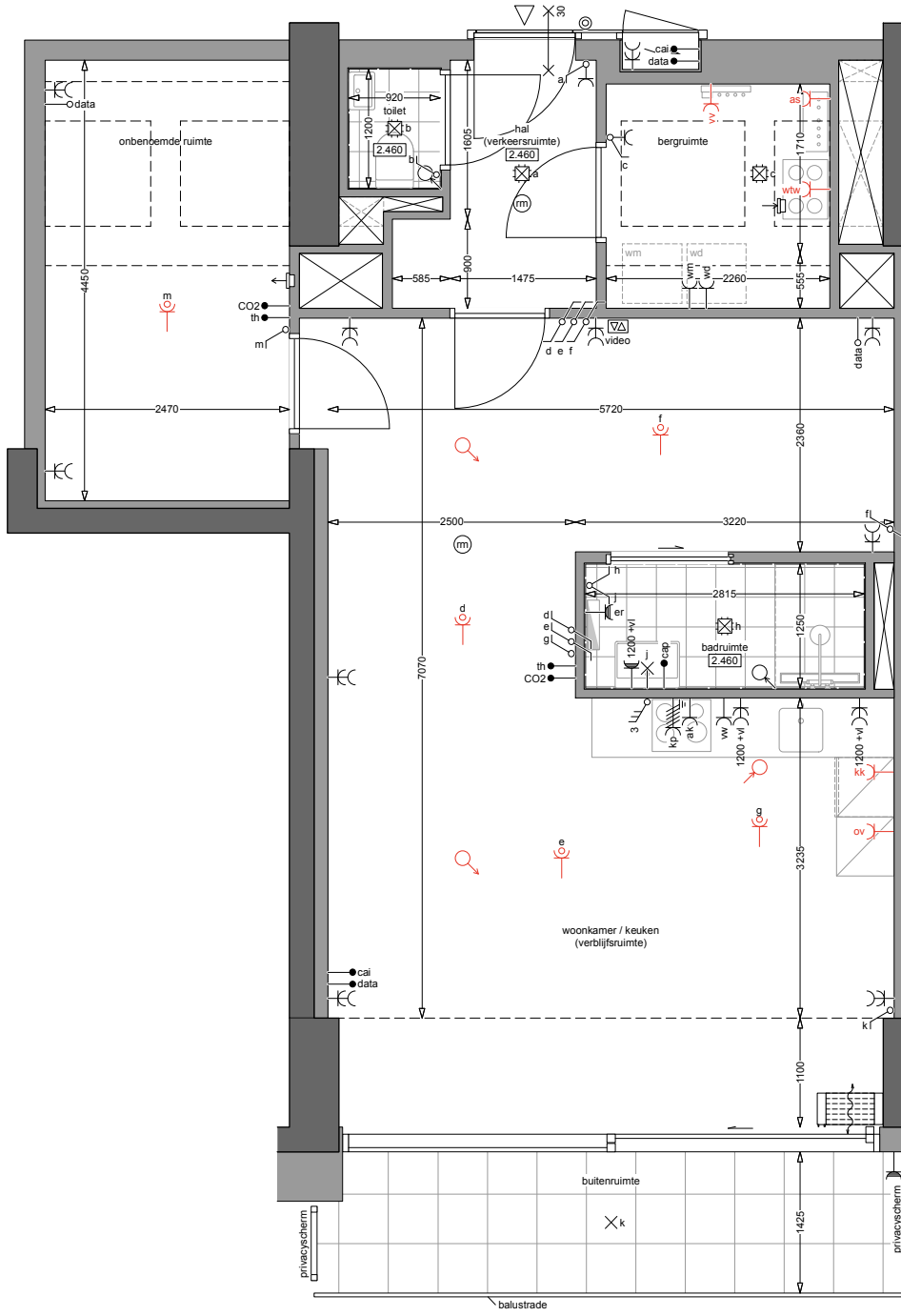
7e verdieping

GO: 69.9m<sup>2</sup>

bouwnummers: 48

13.02.2025





# LAB

ATELIER KEMPE THILL  
ARCHITECTS AND PLANNERS

i.s.m.  
schiemann weyers  
architects

## type B1.5

8e verdieping

GO: 69.4m<sup>2</sup>

bouwnummers: 32

13.02.2025

